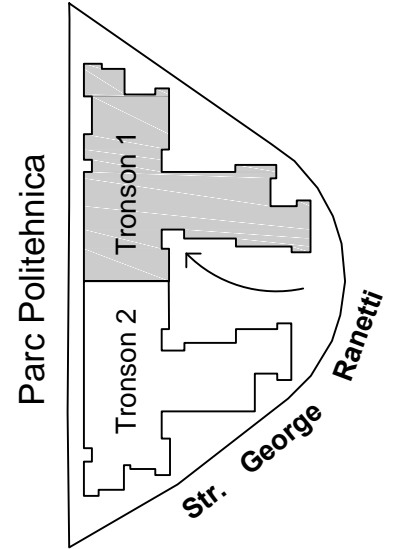
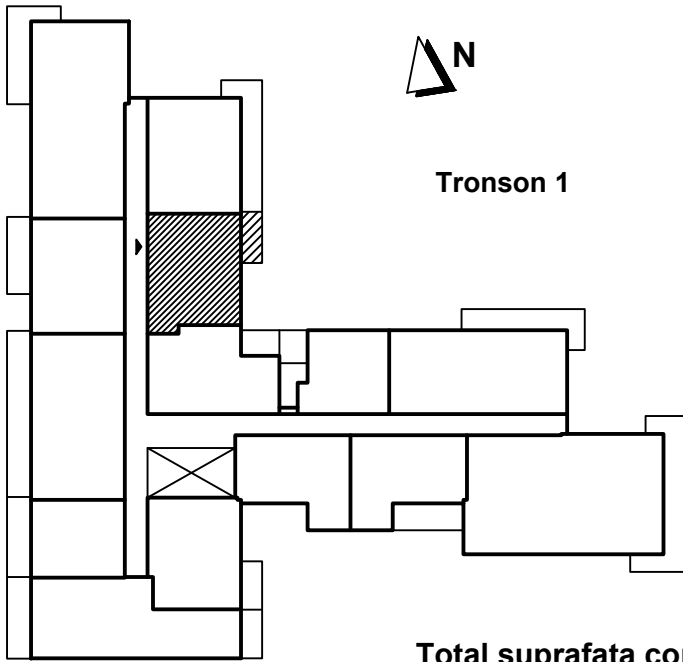


Apartament 2 camere - 1208 /1408 /1608, etaj 2 /4 /6 tronson 1, Str. George Ranetti, Nr. 2-8, Sector 6



Total suprafata construita apartament = 58.60 mp, din care:
 - suprafata construita balcon = 5.40 mp
 Total suprafata utila apartament = 49.00 mp

